



# Vacuum Excavation

To complement our utility mapping solutions, at Technics we also offer a vacuum excavation service. This service provides a low impact, non-destructive solution for visual inspection of the exact positions of buried services even in the most congested of environments.

This investment provides our clients with high levels of accuracy, while at the same time reducing the potential risk that can be associated with excavating around buried services when using more traditional methods.

In line with PAS 128 specification quality level QL-A, vacuum excavation provides a verification process for exposing utilities to determine their type, depth, size and position. This can provide an accurate location with visual inspections for record purposes.

The vacuum excavator safely exposes the position of underground services using high pressure air or water to loosen the soils. Once the soil and materials have been loosened, they are extracted through a high-power suction hose into the spoil/debris tank, these materials can then be reused for backfilling or be disposed of after completion.



## Benefits

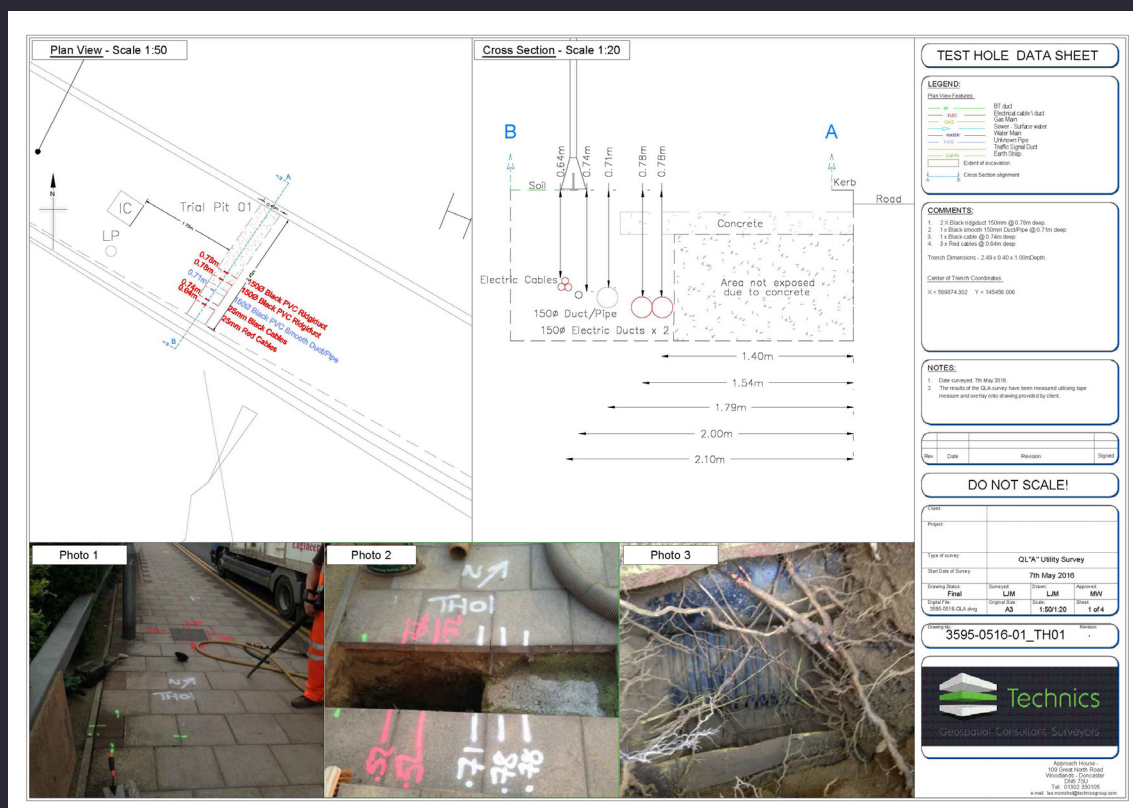
- Significantly reduces the need for manual handling and hand digging
- Enables Technics to provide a more efficient result while significantly reducing the potential risks to site personnel
- Is non-mechanical so it can be employed in inaccessible areas
- Eliminates the potential issues at design stage for construction projects

Typically this system can achieve six to eight 20cm<sup>2</sup> or linear metre excavations to a depth of 1.5m to 2m in a single shift, subject to subsurface conditions and geographical location, which means the risk of excavation collapsing is significantly minimised.

Other benefits include backfilling the existing spoil from the vacuum excavator tank which is cost-effective and beneficial to the environment. Technics can also separate any contaminated soil and dispose of in line with the correct legislation.

## Our value added service

- Handle the procurement of utility asset records required before any excavation or we can carry out a utility mapping survey prior to excavations
- Manage the permit to dig process
- Manage the traffic management requirements
- Accurately survey the exposed utilities
- Reinstate the materials (subject to approval) or manage the removal of the materials if required
- Provide provision for detailed drawings of all detected and exposed utilities using multiple technologies



For more information or to discuss your project please call Lee McNichol on **01302 330 105** or email [lee.mcnichol@technicsgroup.com](mailto:lee.mcnichol@technicsgroup.com)